



Dodge Truck and SUV Cluster Module  
- INSTALLATION INSTRUCTIONS -  
For use with Dodge Ram (1998-2001), Durango (1998-2000), Dakota (1998-  
2000) and Simco Kit Part # 2040-7XX

---

---

Revised: Sept. 16, 2008 Rev. A

Please read and understand all instructions before attempting installation.

Please pay attention to all Cautions and Notes within these instructions.

Simco, Ltd is not responsible for damage or calibration to your original Instrument Cluster.

Thank you,

Simco, Ltd.

# Dodge Truck and SUV Cluster Module - INSTALLATION INSTRUCTIONS -

For use with Dodge Ram (1998-2001), Durango (1998-2000), Dakota (1998-2000) and Simco Kit Part # 2040-7XX

## Read All Instructions and Review Figures Carefully Before Proceeding with Installation

### Contents:

Description	Qty
Simco Cluster Module	1
Installation Instructions	1
Simco Stickers	2

### Installation Procedures

**Tools required:** #2 Phillips Head Screwdriver, Pliers

**Caution:** *The Instrument Cluster contains sensitive electronic components. Great care should be taken when working around or handling electronic components. Avoid touching components on a circuit board directly. Static shock could damage these components. Avoid working in areas that can create excessive static shock such as carpeted rooms.*

1. First disconnect the Negative (-) Battery Terminal and apply the Emergency Brake.
2. Remove the original instrument cluster from the vehicle by the following steps:
  - A. Carefully pull the instrument panel trim away from dash board. (See figure 1)
  - B. Remove the three Phillips head screws from the lower dash panel cover. Pull lower dash panel away from dash board. (See figure 2)
  - C. Located on the steering column is the connection between the gear selector and the PRNDL cable. Disconnect the PRNDL cable from the gear selector. (See figure 3)
  - D. Remove the four black Phillips head screws from the instrument cluster. (See figure 4)
  - E. Carefully pull the instrument cluster from the vehicles dashboard.



Figure 1

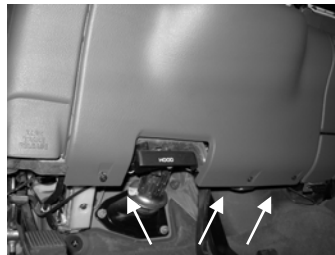


Figure 2

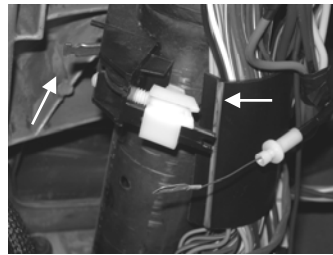


Figure 3

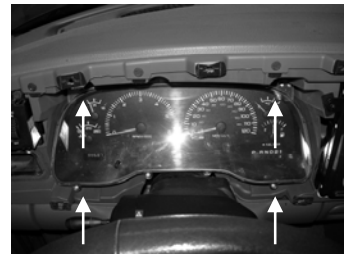


Figure 4

3. Place the original cluster along with the new Instrument Cluster module on a soft clean surface.
4. Remove the seven Phillips head screws from the front of the instrument cluster. (See figure 5)
5. Remove the clear lens and black bezel from the instrument cluster.
6. Carefully remove the OEM graphic & gauge assembly by pulling it evenly away from the circuit board & housing assembly. (See figure 6)

**Caution:** *The Instrument cluster contains sensitive electronic components. Great care should be taken when handling the circuit board. Avoid touching components on the circuit board directly and handle the circuit board by its edges. Static shock could damage the components. Avoid working in areas that can create excessive static shock such as carpeted rooms.*

- Carefully place the new Instrument Cluster module into the circuit board & housing assembly. Make sure to keep the lamp connector outside of the housing. (See figure 7) The Gauge Pins must be aligned with the holes in the circuit board or the module will not fit.

**Caution:** Damage to the new module may occur if the Gauge Pins on the rear of the Module are not correctly aligned with the circuit board.

**Caution:** Do not pinch the new lamp connector wires with the new Instrument Cluster module.

- Once the new Instrument Cluster module has been properly placed into the circuit board and housing assembly, the clear lens and black bezel may be re-installed over the new module and securely fastened using the seven screws removed in step 3.
- Remove the upper left lamp from the back of the circuit board by turning the lamp ¼ turn counter-clockwise with a pair of pliers. (See figure 8)

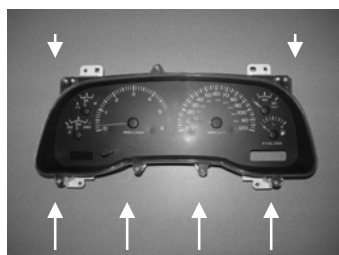


Figure 5

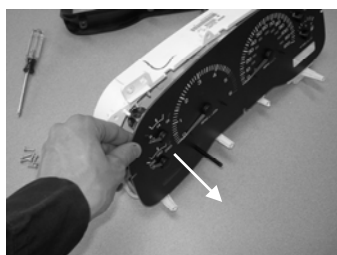


Figure 6

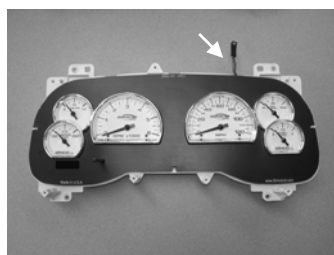


Figure 7

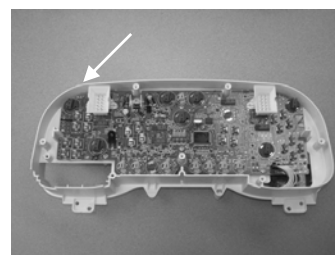


Figure 8

- Plug the new lamp connector into the empty lamp socket as shown. (See figure 9)

**Note:** The lamp connector **MUST** have the **Red wire** side facing up towards the top of the cluster.

- Re-install Custom Instrument Cluster back into dash by following steps 1. A-E in reverse order.

Note: Make sure to guide and fasten the gear selector cable to its connection on the gear selector column.

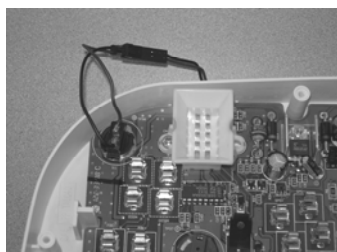


Figure 9



Figure 10